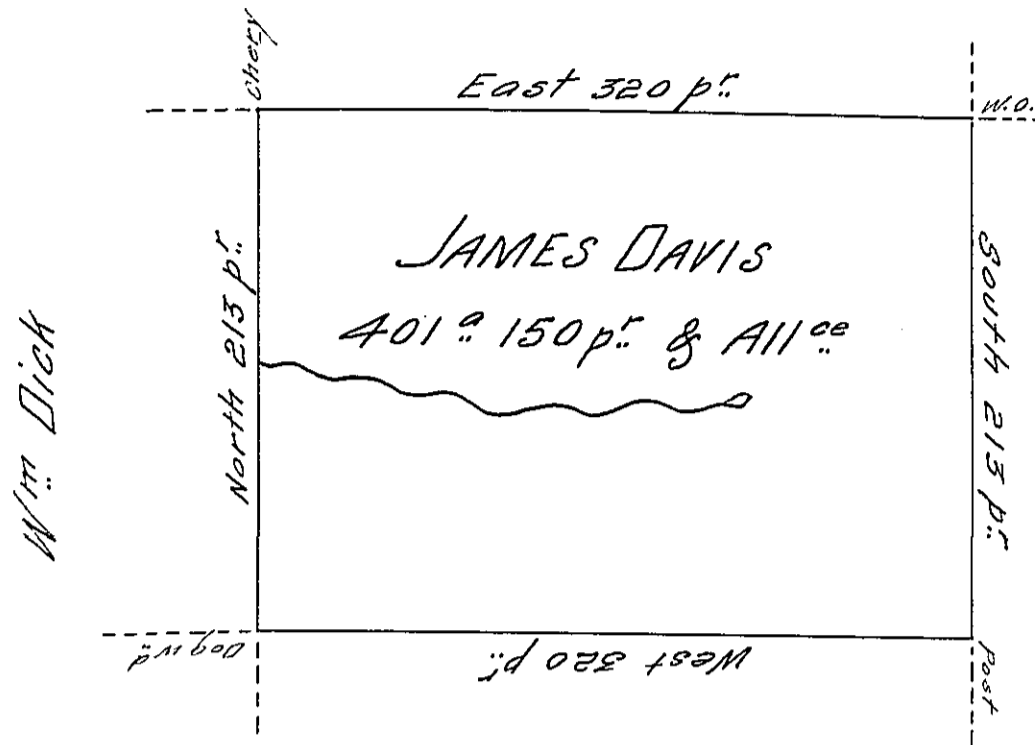


John Davis



Wm Barry

Situate on the west side of French Creek  
 in Allegheny County Containing 401 Acres and  
 150 p<sup>t</sup>. and allowance of Six  $\frac{1}{2}$  Cent for Roads &<sup>ce</sup>  
 Surveyed the 8<sup>th</sup> day of November 1794 In pursuance  
 of his Improvement bearing date the 7<sup>th</sup> day of  
 November 1794

Wm Power D<sup>r</sup>. Sr.

To Daniel Brodhead Esq<sup>r</sup>. }  
 Surveyor General }

IN TESTIMONY that the above is a copy of the original remaining on file in  
 the Department of Internal Affairs of Pennsylvania, made  
 conformably to an Act of Assembly approved the 16th day of  
 February, 1833, I have hereunto set my Hand and caused  
 the Seal of said Department to be affixed at Harrisburg,  
 this fourteenth day of June 1906

*Leach P. Brown*  
 Secretary of Internal Affairs.